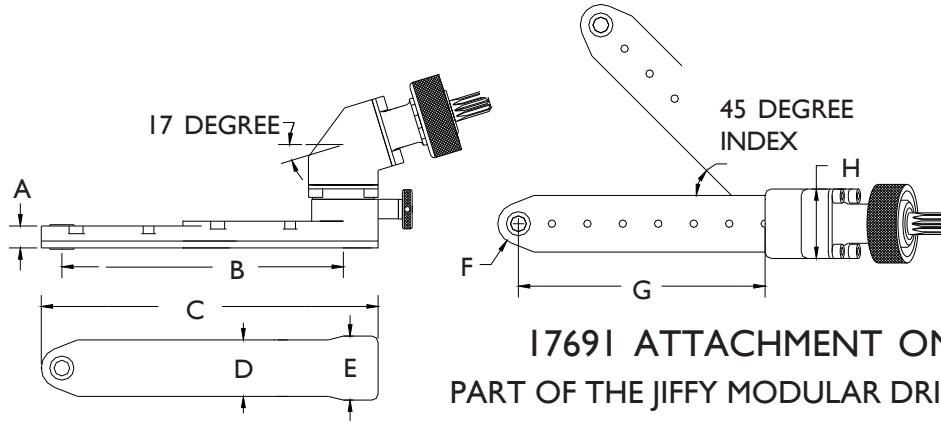


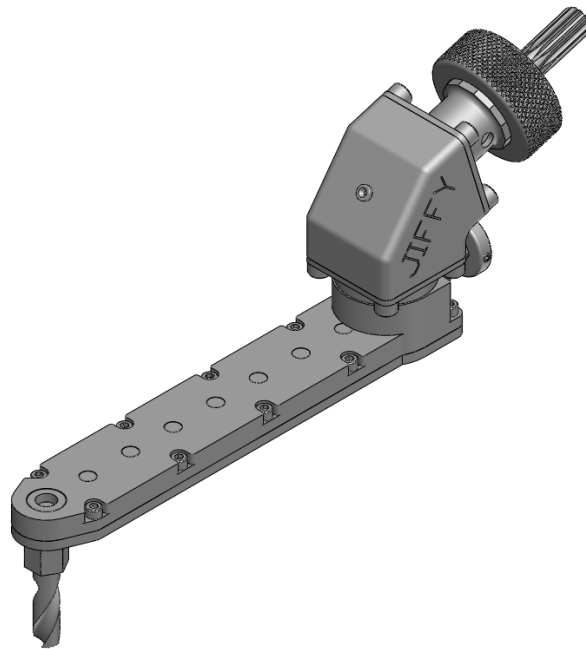
	A	B	C	D	E	F	G	H	SERIES 2 17 DEGREE DRILL	
INCH	.350	4.48	5.35	.90	1.02	.327	3.93	1.10	MAXIMUM RECOMMENDED	.250 INCH
MM	8.89	113.8	135.9	22.8	25.9	8.3	99.8	27.9	DRILL DIAMETER	6.35 mm



## SERIES 2 INDEXABLE 17 DEGREE DRILLS



**1769I ATTACHMENT ONLY**  
PART OF THE JIFFY MODULAR DRILL SYSTEM



Shown with  
17639  
.85 HP 3000 RPM  
Straight Motor

You must select an  
internal thread

THREADED  
DRILL



COLLET TYPE  
DRILL



INTERNAL THREAD CODE	
1/4-28	A
10-32	C
9/32-40	E
5/16-24	F
7mm COLLET	D

PHONE: 1 775 883 1072 FAX: 1 775 883 4857